

Reinventing Conductor Removal with Down-End Innovation



Offshore Decommissioning
Conference St. Andrews
November 25th, 2025
Simon Szkudlarek

The Venue: Veslefrikk-A



Heerema signed a contract with Equinor for removal of the Veslefrikk-A platform

Location:

Norwegian North Sea,
Block 30/3, West of Bergen (Norway)
~ 175m water depth

Removal scope:

- ~ 5,300 mT Topside
- ~ 4,800 mT (24 no.) Conductors of approx. 200m length
- ~ 12,000 mT Tons Jacket

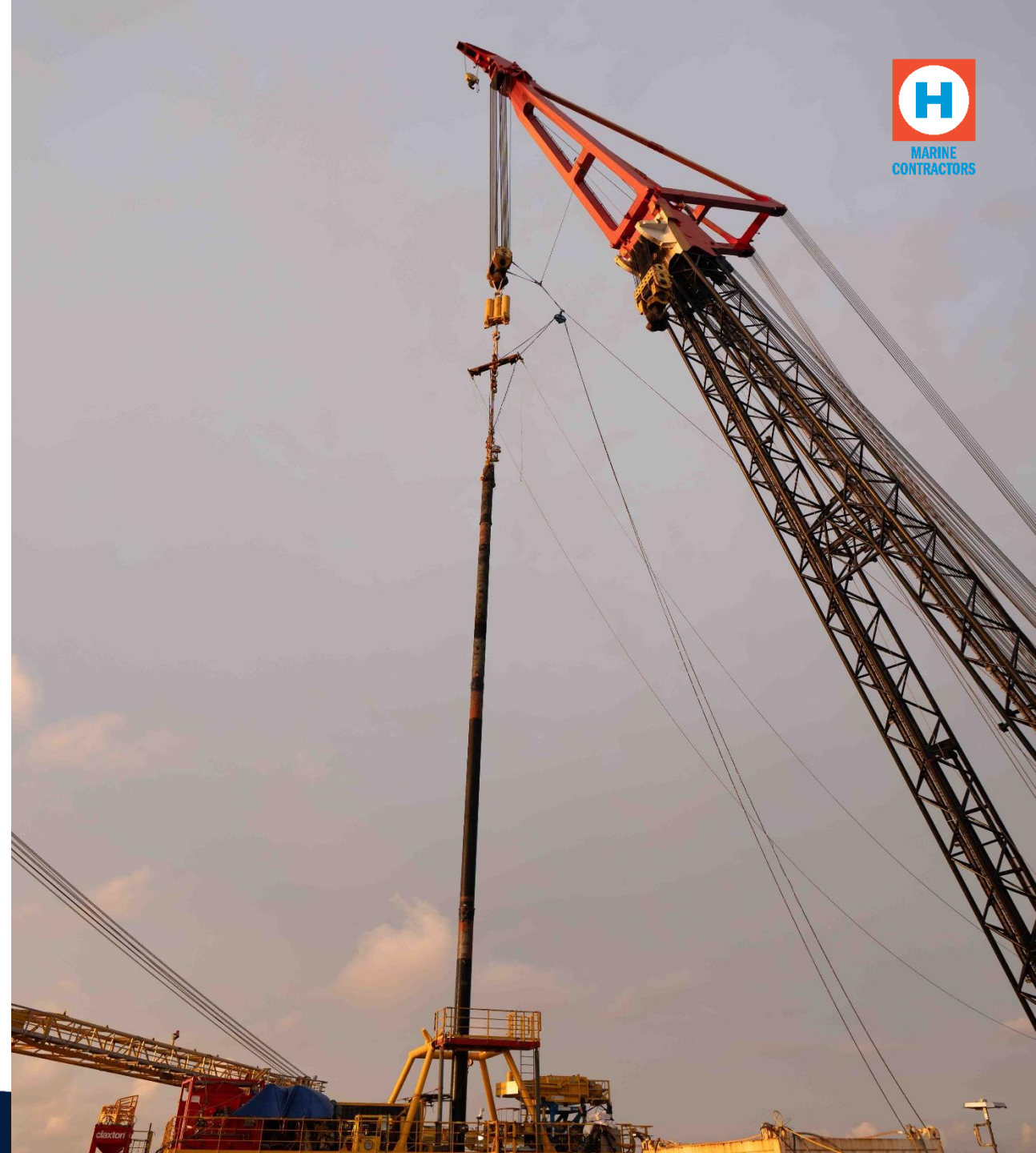


The Challenge

Extensive conductor removal scope of work; total conductor length to be removed \approx 4.8 km

24 Conductors of approx. 200m:

- Each to be removed in 4 sections (of approx. 50m length per section)
- To be down-ended onboard DCV Balder before storage on deck / transportation to shore
 - Uncertain structural integrity of conductors – possibility of buckling / breaking
 - Potential dropped objects
 - All removal steps to be repeated multiple times
- To be delivered to the Decom yard (Aker Solutions – Stord) in an on-shore manageable way



The Challenge

Performing the removal of the 96 Conductor sections:

- Safely – no manual handling / no exposure of personnel
- Efficiently – the conductor removal needs to be executed within the offshore removal campaign of ~28 days at the platform
- Limited deck space for storage of conductors on deck
- Conductor logistics at Decom yard needs to be easily manageable

The Design Challenge

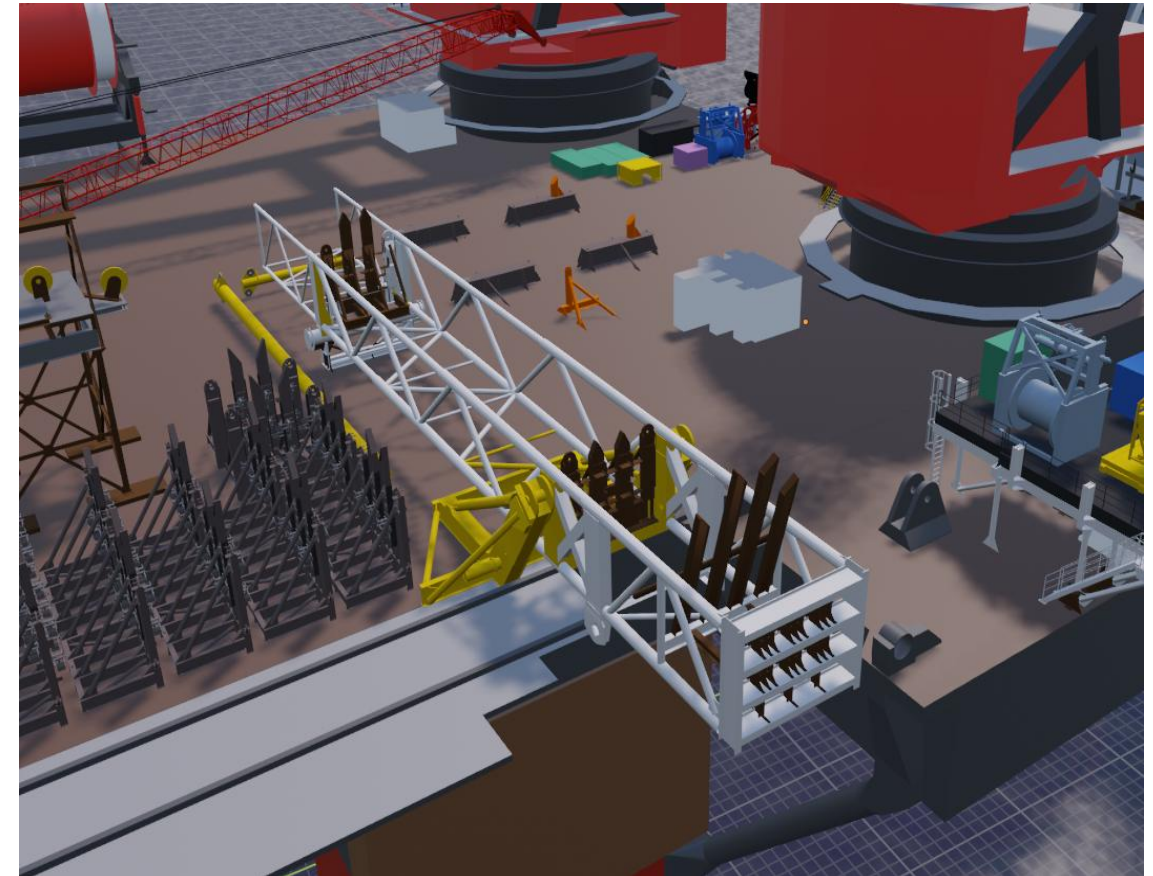
Design a **Conductor Down-End Frame** capable of a safe removal and efficient handling of 96 conductor sections:

- ☐ Safe
 - down-end frame to support each individual conductor section to avoid buckling / breaking
- ☐ Modular
 - conductor sections stored in batches of 12 in replaceable cradles; easily repeatable
 - cradles easily adaptable to other OD's (up to 30")
- ☐ Efficient
 - conductor down-ending to be executed in batches of 12 instead of one-by-one
- ☐ Efficient and safe way for set-down and logistics at Decom yard

The Outcome

In-house designed, engineered and fabricated:

- Conductor Down-End Frame
- 16 cradles:
 - Per 2 installed in down-end frame
 - Per pair capable of:
 - down-ending & storing 12 sections (26" OD)
 - Efficient transfer to Decom yard and safe and easy removal of conductors from the cradles

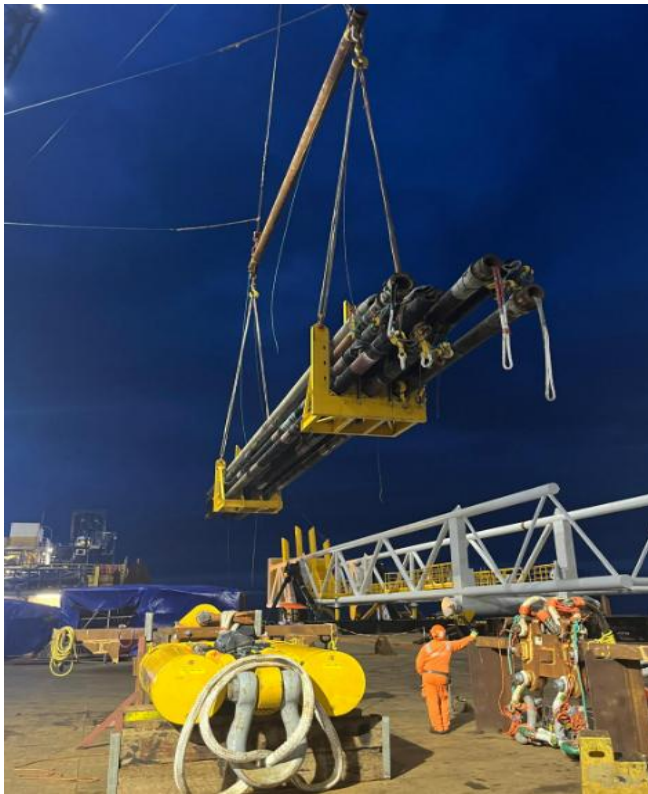


The Outcome

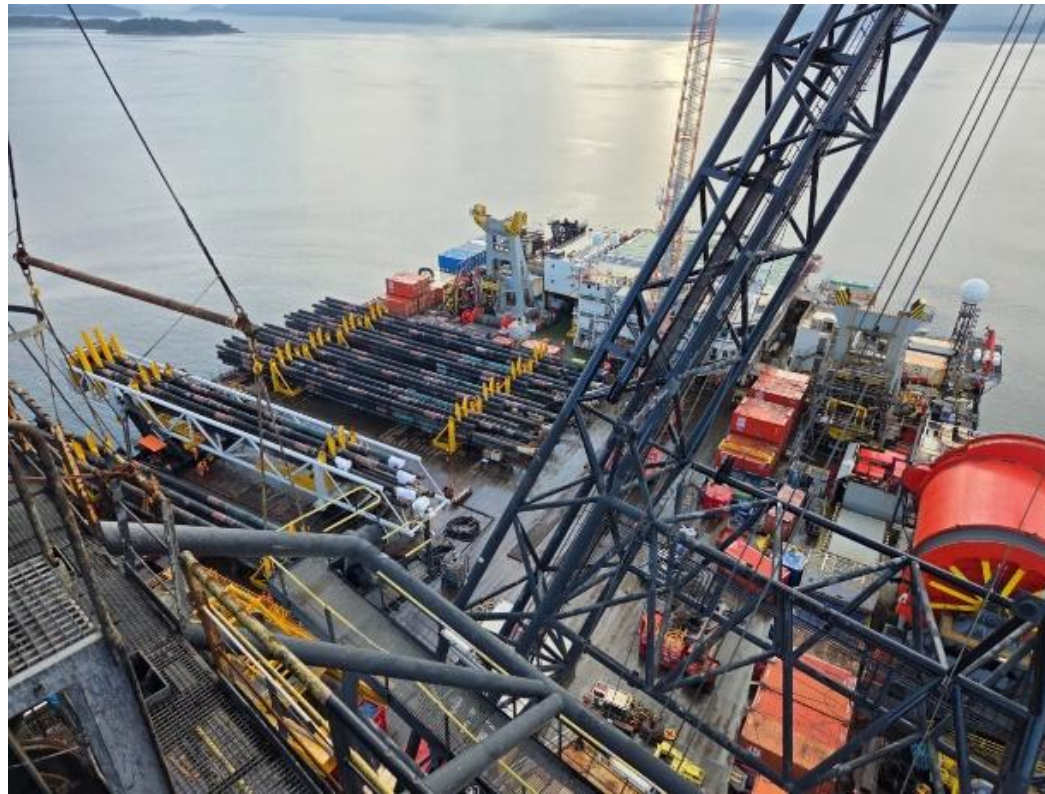


The Outcome

Cradles with Conductor sections removed from down-end frame



Cradles stored on deck
DCV Balder



Cradles offloaded on
AKSO Stord yard

