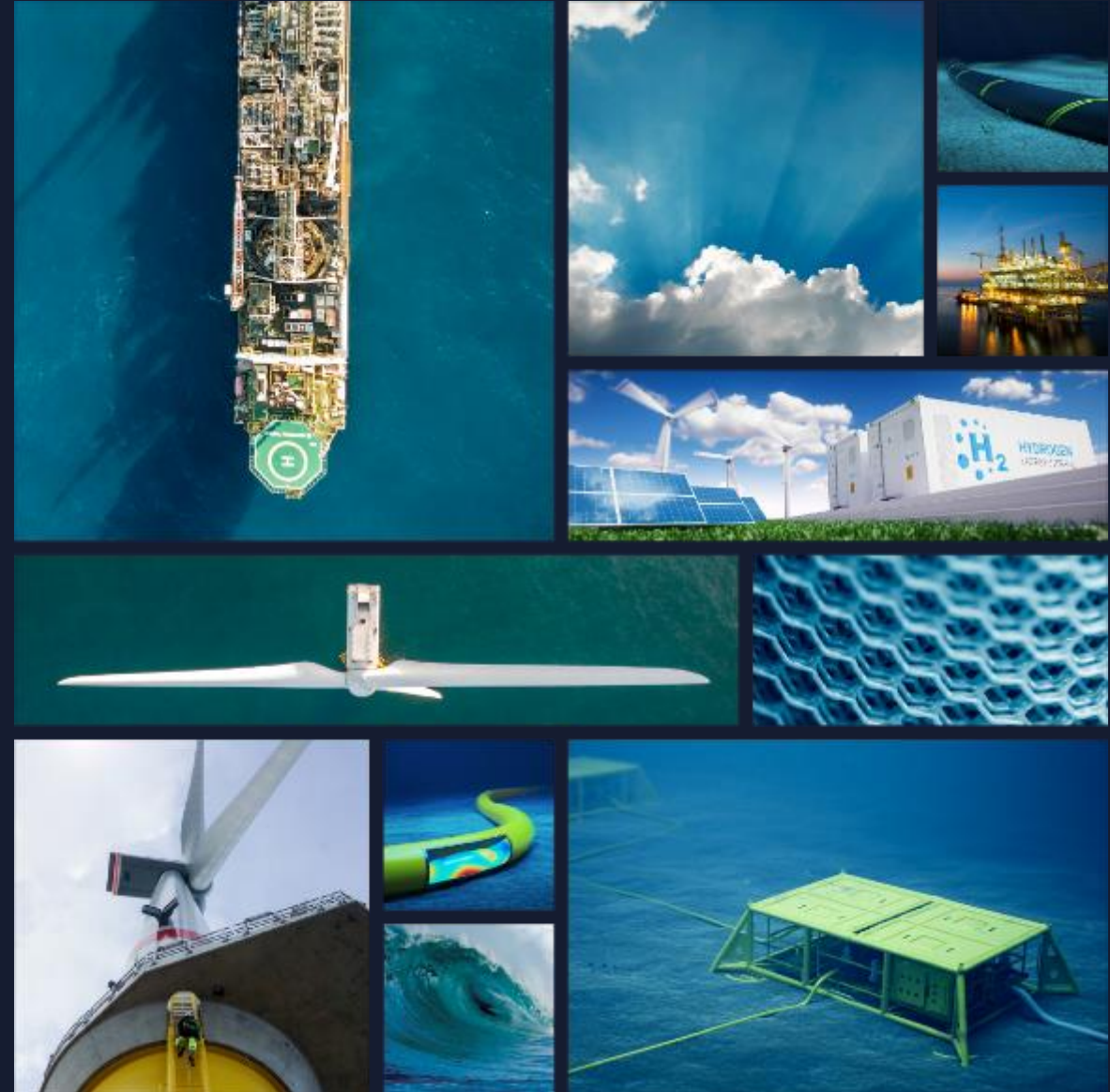




# Leveraging Digital Tools to Revolutionise Post-Decom Monitoring

Gareth Jones  
Decommissioning Manager  
gareth.jones@xodusgroup.com

[WWW.XODUSGROUP.COM](http://WWW.XODUSGROUP.COM)





# Current challenge

- What are we trying to answer and why
- No specific written guidance on requirements
  - More onerous survey works
  - Longer durations
  - Uncertainty
  - Lack of consistent approach
  - Difficult to accurately plan costs



# What are the real questions to be asking?

Do we need to look at the whole pipeline?

Are any of the spans or exposures actually accessible?

## What is the true risk of impact?

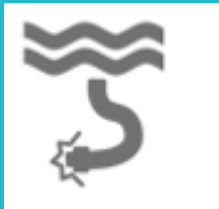
Are there actually any receptors at risk in the area?

Is there any risk of movement?



# One solution

- Model pipeline data along with physical, environmental and societal data visualised with an assessed factor of accessibility and risk of interaction by other users.
- Use in multiple steps in the decision process – CA, Stakeholder engagement, EA, Post-decom and Close-out.
- Database to show rates of change, next step planning and when to cease monitoring.



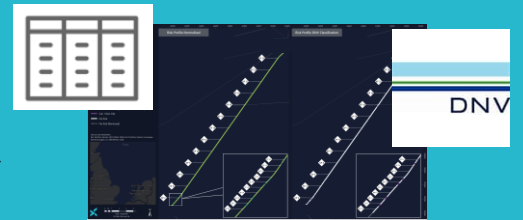
Pipeline data – location, depth of burial, spans, exposures, multiple years – convert to GIS input



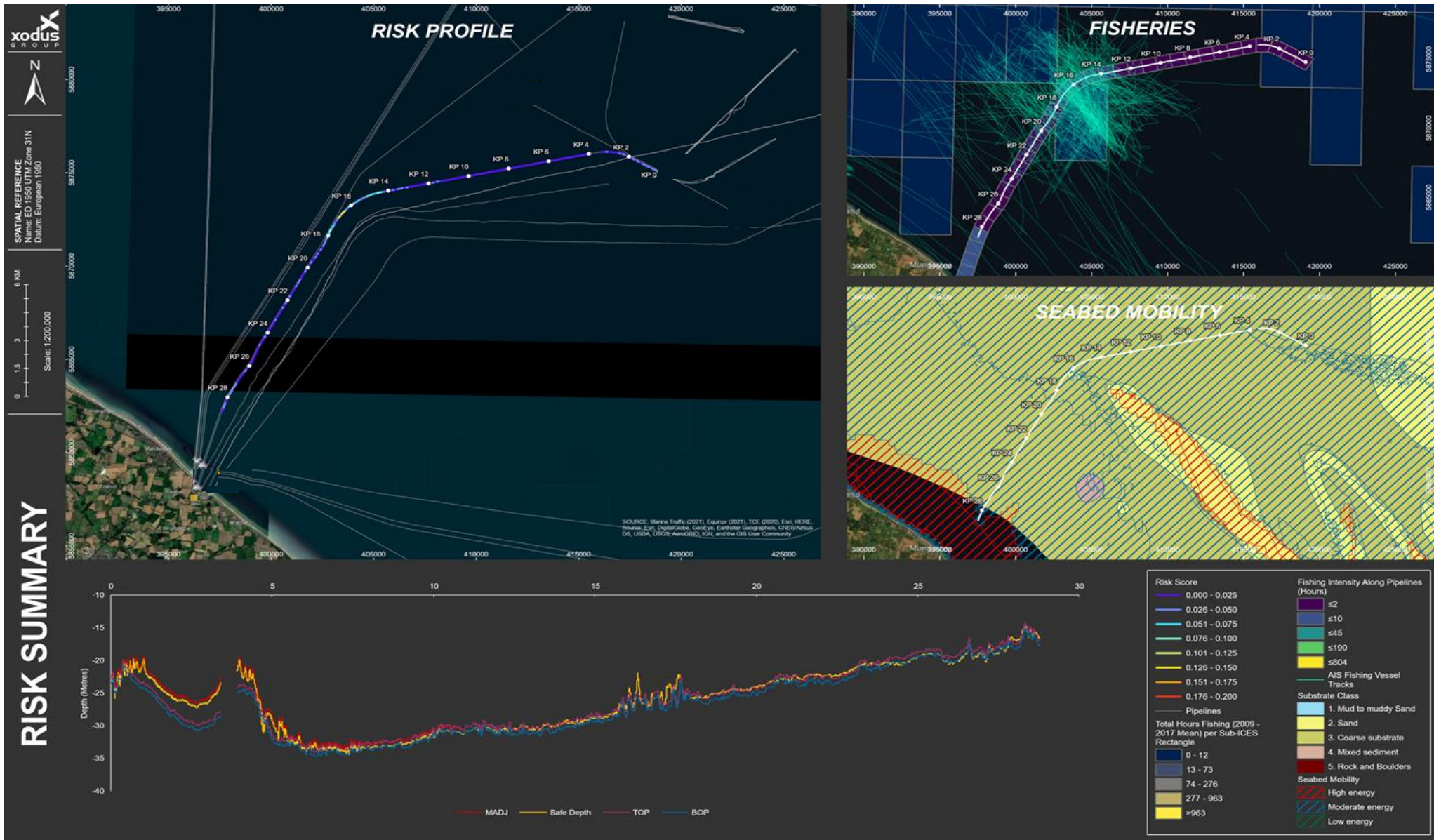
GIS layers – Pipelines, currents, seabed type, Bathymetry, fishing, shipping, windfarms etc



Assessment - interaction and overlap, classification of impact potential, DNV standard applied (DNV-RP-F107)



Outputs – Visual and tabulated outputs. Based on available data, focused on areas of risk





# Value to everyone

Significant cost savings (£Ms)

Meaningful results

Predictable decom spend

Frees up vessel time

Reduce unnecessary scope

Reduce carbon intensity

Consistent, evidence based approach

Track progress

**THIS IS WHAT  
WE DO.**

