

# Thistle Alpha P&A

## Seizing Opportunity and Embracing Challenge

**Kevin Stilwell**

November 2023



# Seizing Opportunity and Embracing Challenge

## Thistle Alpha Platform



## Seizing Opportunity and Embracing Challenge

# Decision to Decommission



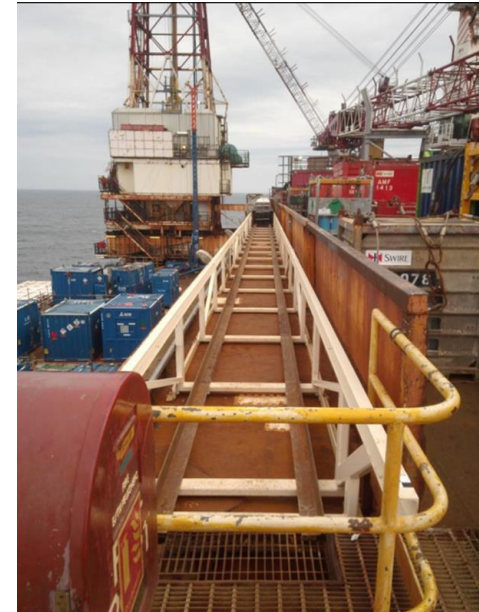
## Seizing Opportunity and Embracing Challenge

# Platform Re-Habitation



# Seizing Opportunity and Embracing Challenge

## Rig Re-Activation

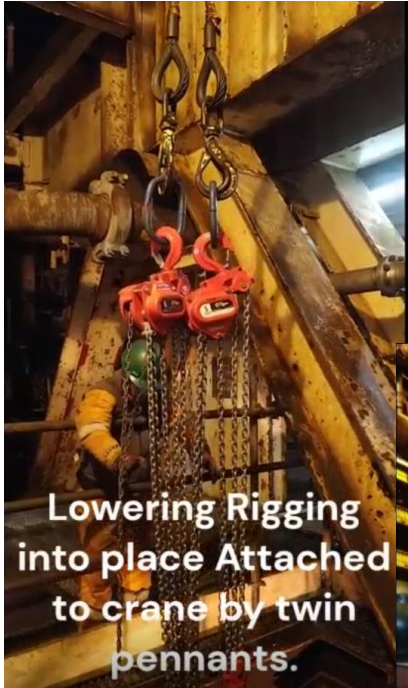


# Preparing for Decom



# Seizing Opportunity and Embracing Challenge

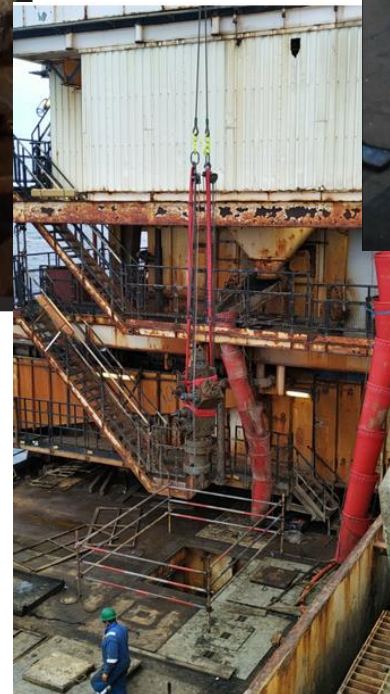
## Offline Tree Removal



Lowering Rigging into place Attached to crane by twin pennants.



Fitting x 2 Flange Spreaders



X-Mas Tree transferred to deck

## Seizing Opportunity and Embracing Challenge

# Rig-Less Campaign





## Seizing Opportunity and Embracing Challenge

# WellGear Conductor Pulling Unit (CPU)



# Seizing Opportunity and Embracing Challenge

## Clamps



# Seizing Opportunity and Embracing Challenge

## Conductors



## Seizing Opportunity and Embracing Challenge

# Old Records - Telex??



DATE : 5TH AUG 1987

SUBJ : PRODUCTION WIRELINE + COMPLETIONS REPORT 5-8-87

SLOT 34 CASING REPAIR/DUAL COMPLETION

0600-1800 R/U + RUN 20' PATCH + 20' CSG INSTALLING CENTRALIZERS  
AS PER BRITOLL PROGRAMME: TACK WELD 1" WELD 1" CMT LINES  
TO CENTRALIZERS AS CSG RUN

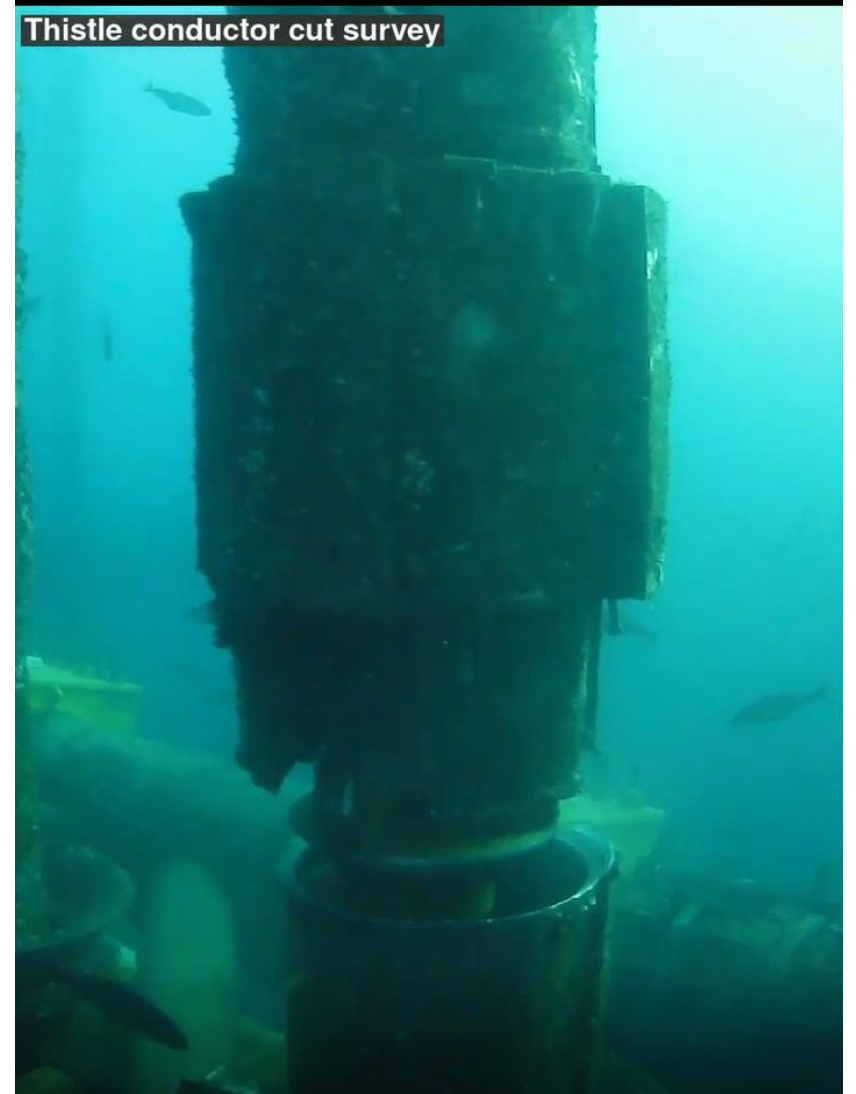
1800-2030 M/U 20' SPEAR ASSY + LAND 20' CSG: P/U 25K O/PULL TO  
ENSURE GRAPPLE ENGAGED

2030-0230 M/U + P.TEST CMT LINES TO 1000PSI: ESTABLISH RATE/PRESS  
RATIO THROUGH LINES BEFORE CMTG. CMT 30'/20' ANNULUS  
AS PER PROGRAMME. CLEAN + R/D CMT LINES

0230-0600 CONSTRUCTION WELD SECTION BETWEEN 30' + 20' BASEPLATE  
AS PER PROGRAMME

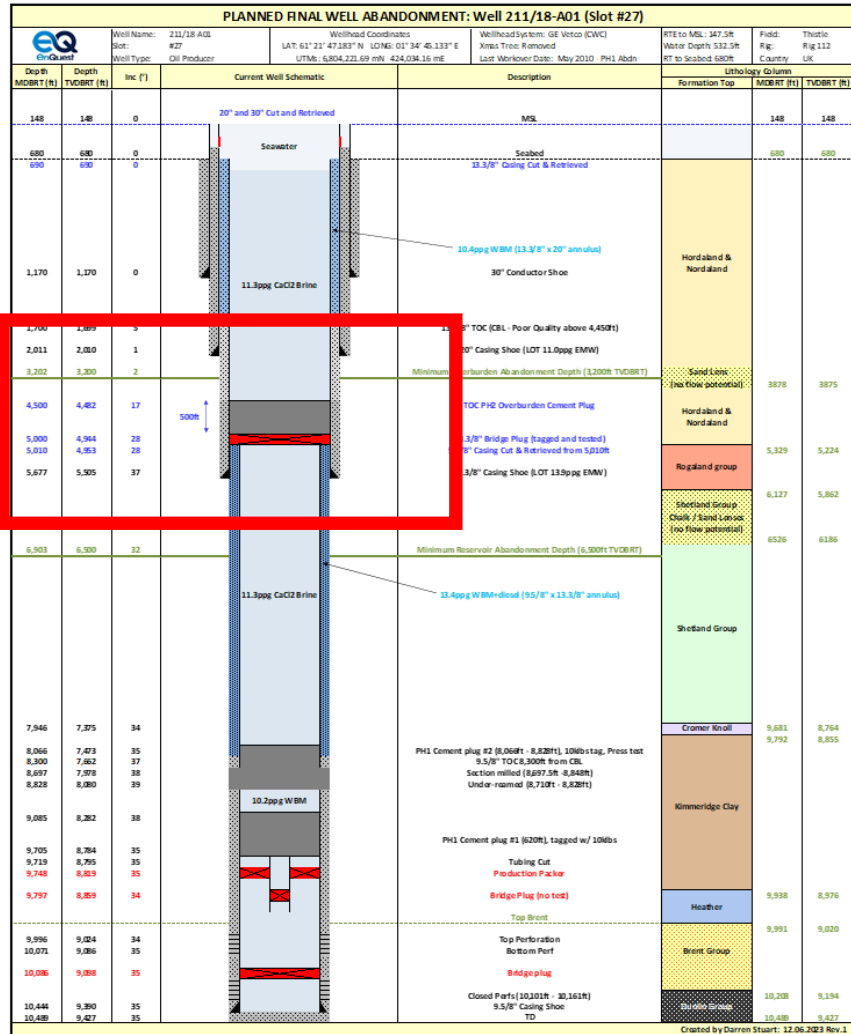
# Seizing Opportunity and Embracing Challenge

## Micro ROV



# Seizing Opportunity and Embracing Challenge

## 9 5/8" Casing Recovery



# Seizing Opportunity and Embracing Challenge

## 9 5/8" Casing Recovery



**Performance Datasheet**

Drill Pipe

Size: **5" IEU x 19.50 lbs/ft**  
 Connection: **NC50**  
 Pipe grade: **S-135**  
 Range: **2**

DRILL PIPE DIMENSIONS & MATERIALS				
PIPE		NEW	ASSEMBLY	HANDLING
OD	in	5	Sh to Sh length	ft 31.5
Wall thickness	in	0.362	Approx weight	lbs 735
ID	in	4.276	Adjusted weight	lbs/ft 23.35
Yield Strength	KSI	135		
TOOL JOINT			HYDRAULICS	
Connection		NC50	Open end disp.	US gal/ft 0.36
OD	in	6-5/8	Closed end disp.	US gal/ft 1.07
ID	in	3-1/4	Capacity	US gal/ft 0.71
Box tong length (Lb)	in	12		
Pin tong length (Lp)	in	9		
Make-up loss (MUL)	in	4.500		
Yield Strength	KSI	120	Drift diameter	in 3-1/8

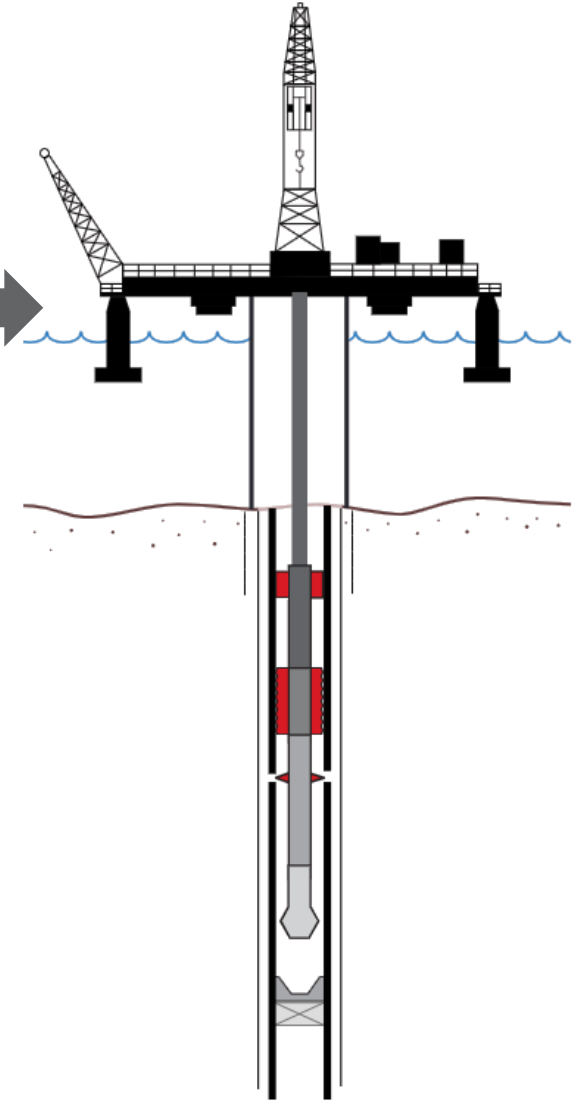
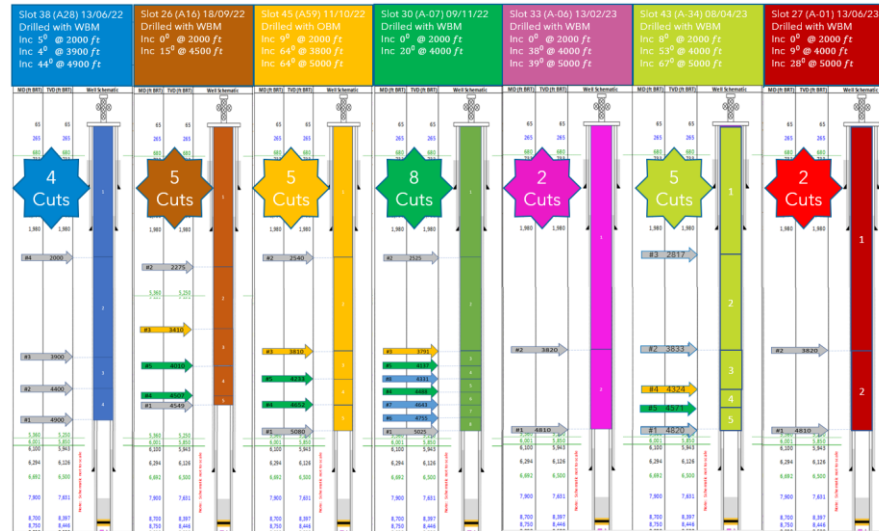
DRILL PIPE WEAR				
PIPE		NEW	PREMIUM min	CLASS 2 min
% Remaining body wall	%	100%	80%	70%
OD	in	5	4.855	4.783
Wall thickness	in	0.362	0.290	0.253
Cross sectional area	in <sup>2</sup>	5.275	4.154	3.606
TOOL JOINT				
OD	in	6-5/8	6-5/16	6-3/16

DRILL PIPE MECHANICAL PERFORMANCES				
PIPE		NEW	PREMIUM min	CLASS 2 min
Tensile strength	lbs	712,000	561,000	487,000
Torsional strength	ft-lbs	74,100	58,100	50,400
80% Tors. strength	ft-lbs	59,300	46,500	40,300
Collapse pressure	PSI	15,700	10,000	7,080
Internal pressure	PSI	17,100	15,600	13,700
TOOL JOINT				
Tensile strength	lbs	1,270,000	1,270,000	1,270,000
Torsional strength	ft-lbs	51,200	47,300	41,100
Recommended make-up torque (1)	ft-lbs	30,700	28,400	24,600
Maximum make-up torque				
Minimum make-up torque				
Balance OD	in	6.389	6.389	6.389
Torsional ratio TJ/pipe		0.69	0.81	0.82

(1) Performances calculated with a friction factor of 1.0  
 API GENERALLY RECOMMENDS A TORSIONAL RATIO OF 0.80 OR LARGER

### Implementation of 3 key learning points

- Cutting strategy
- Higher overpulls
- BHA design



## Seizing Opportunity and Embracing Challenge

# Environmental Barriers - Removing the OBM





## Seizing Opportunity and Embracing Challenge

# Thanks for Listening

