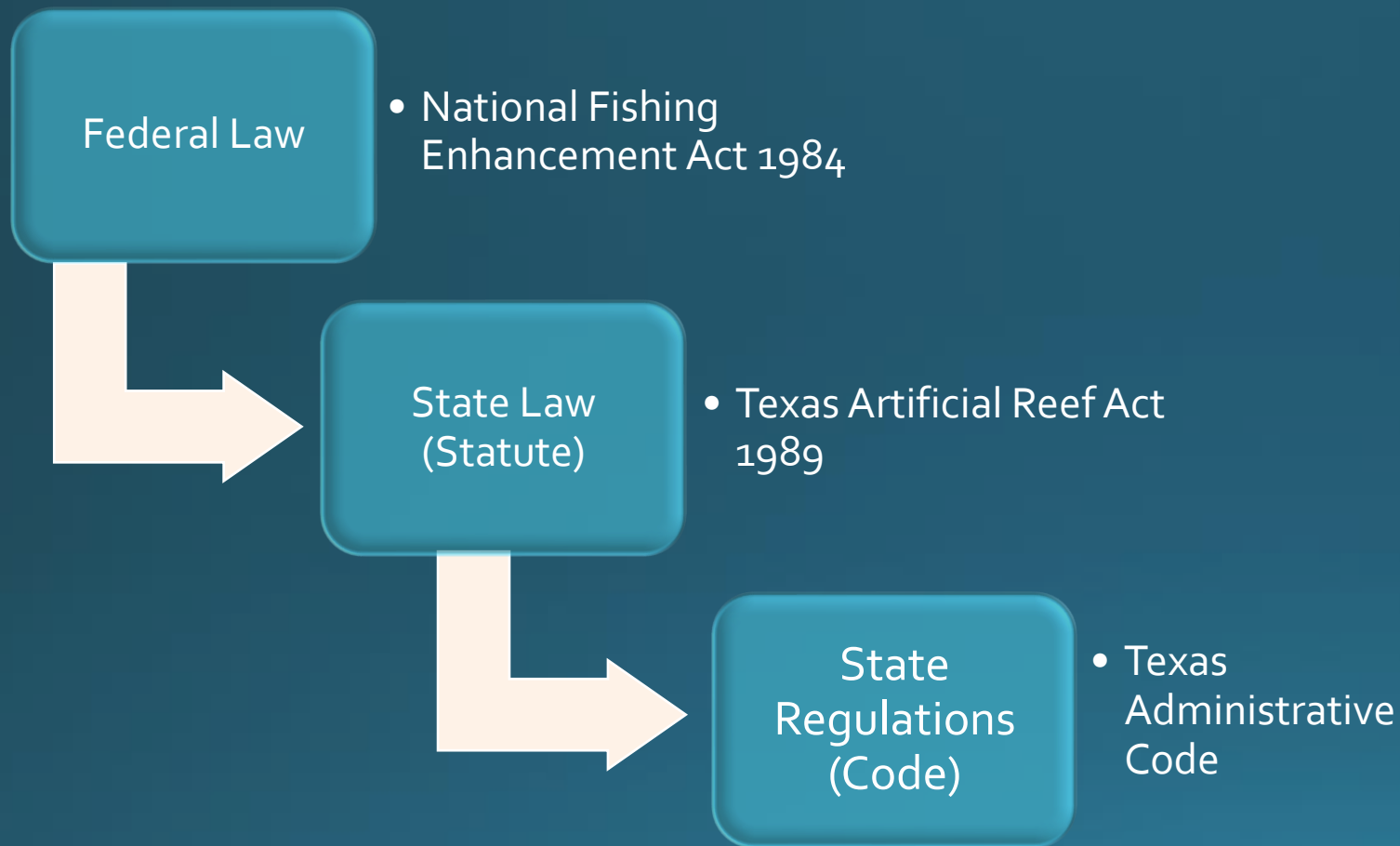




Rigs to Reefs in the USA: A Case Study in Texas

Emma Clarkson, Ph.D.
Texas Parks and Wildlife Department



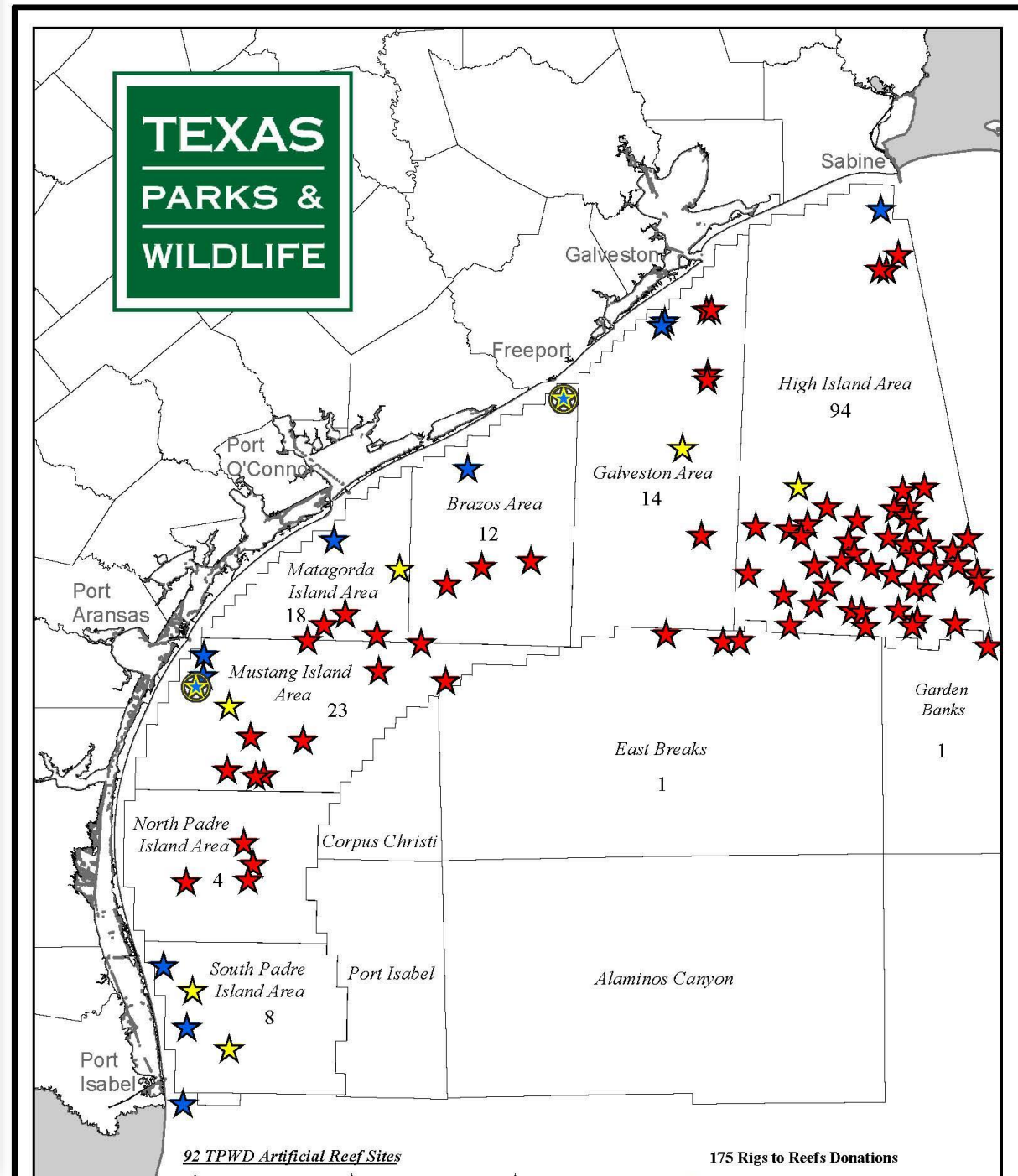
• National Artificial Reef Plan

- Siting criteria – Ecological and socioeconomic benefit
- Design and material criteria
- Monitoring
- Methods for managing the use of artificial reefs

Texas Artificial Reef Program

- Rigs to Reefs
- Ships to Reefs
- Nearshore Reefs

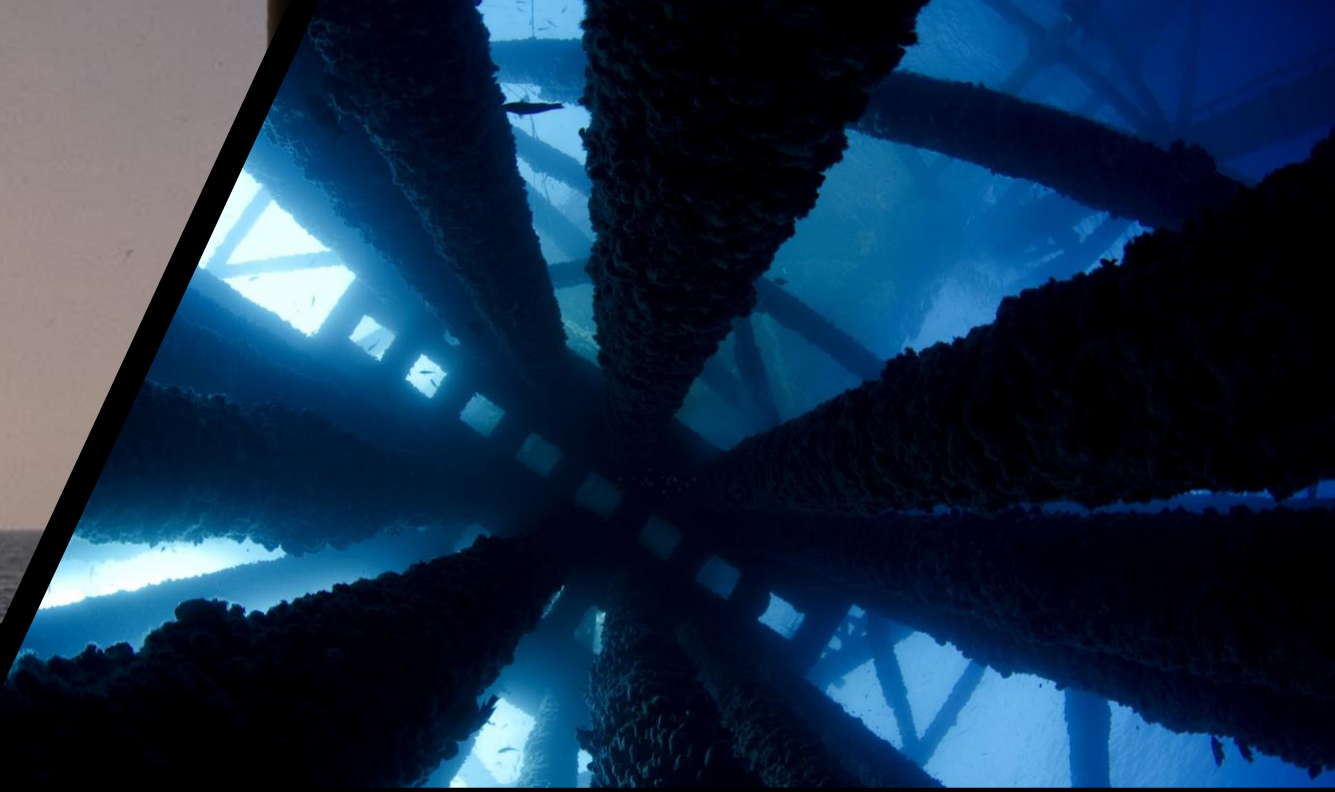
- 93 reef sites
- 175 platforms
- 25 vessels
- Over 10,000 concrete structures

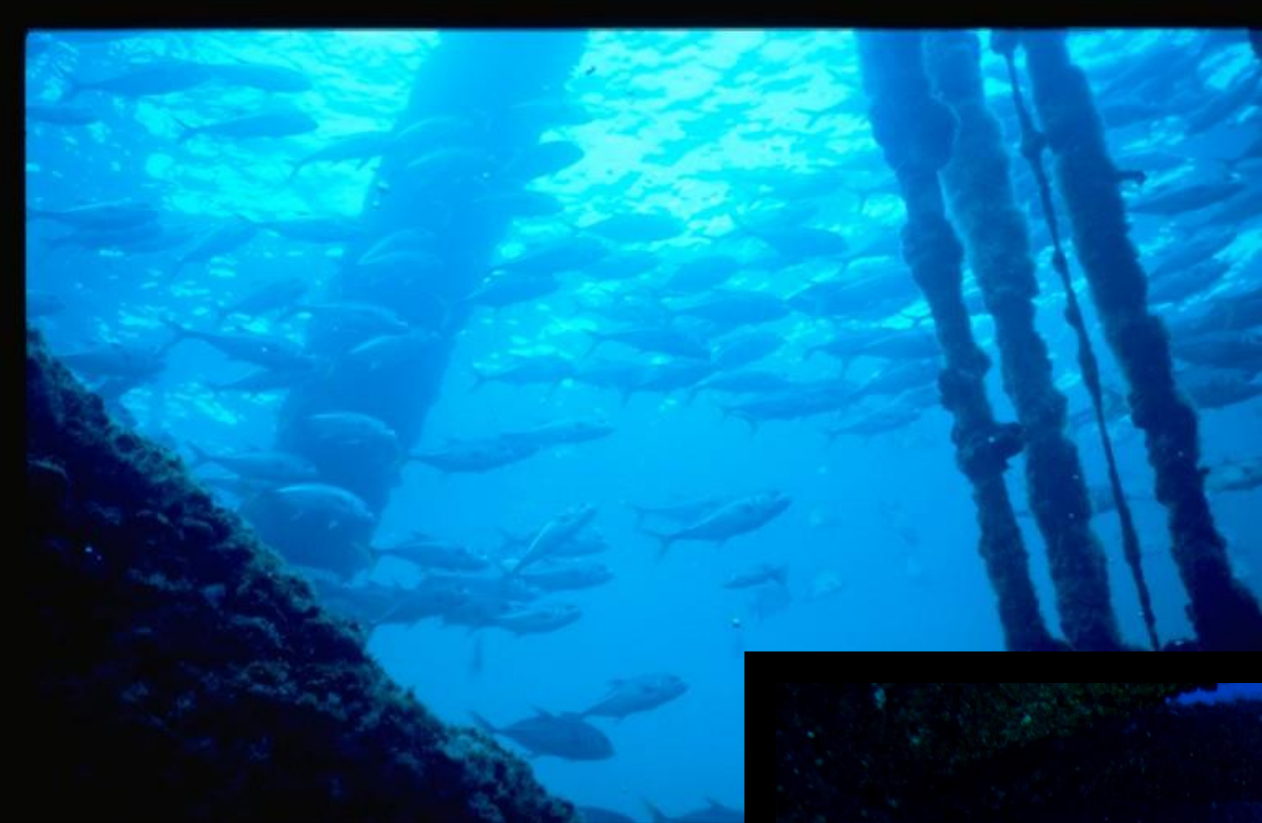




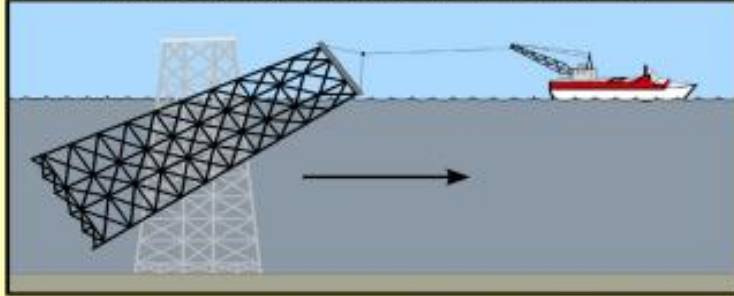


Photos courtesy of Friends of RGV Reef

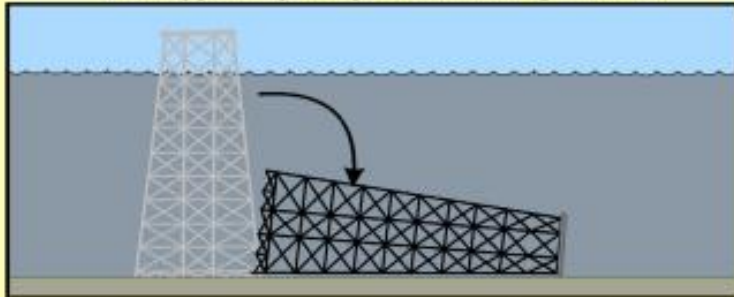




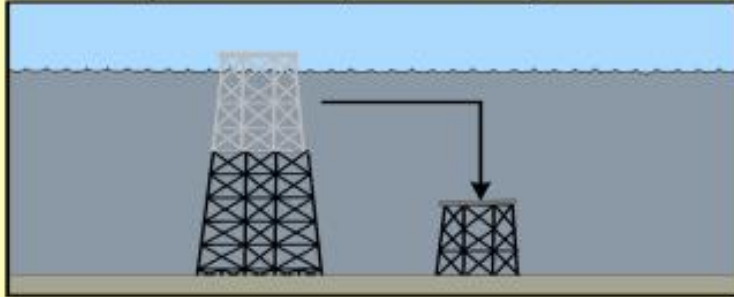
The tow-and-place platform reefing method



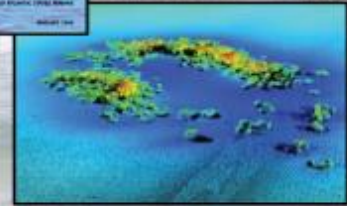
The topple-in-place platform reefing method



The partial removal platform reefing method



GUIDELINES FOR MARINE ARTIFICIAL REEF MATERIALS THIRD EDITION



A JOINT PUBLICATION OF THE GULF AND
ATLANTIC STATES MARINE FISHERIES COMMISSIONS

NUMBER 296

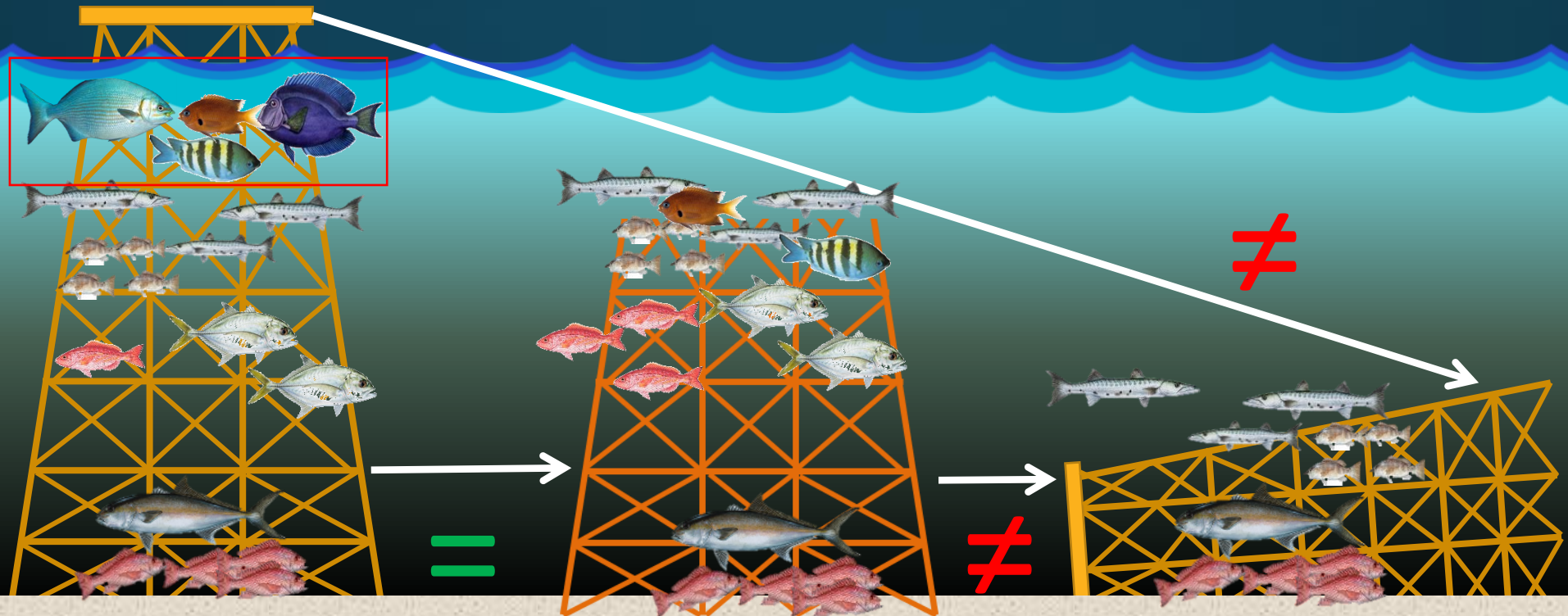
MARCH 2020

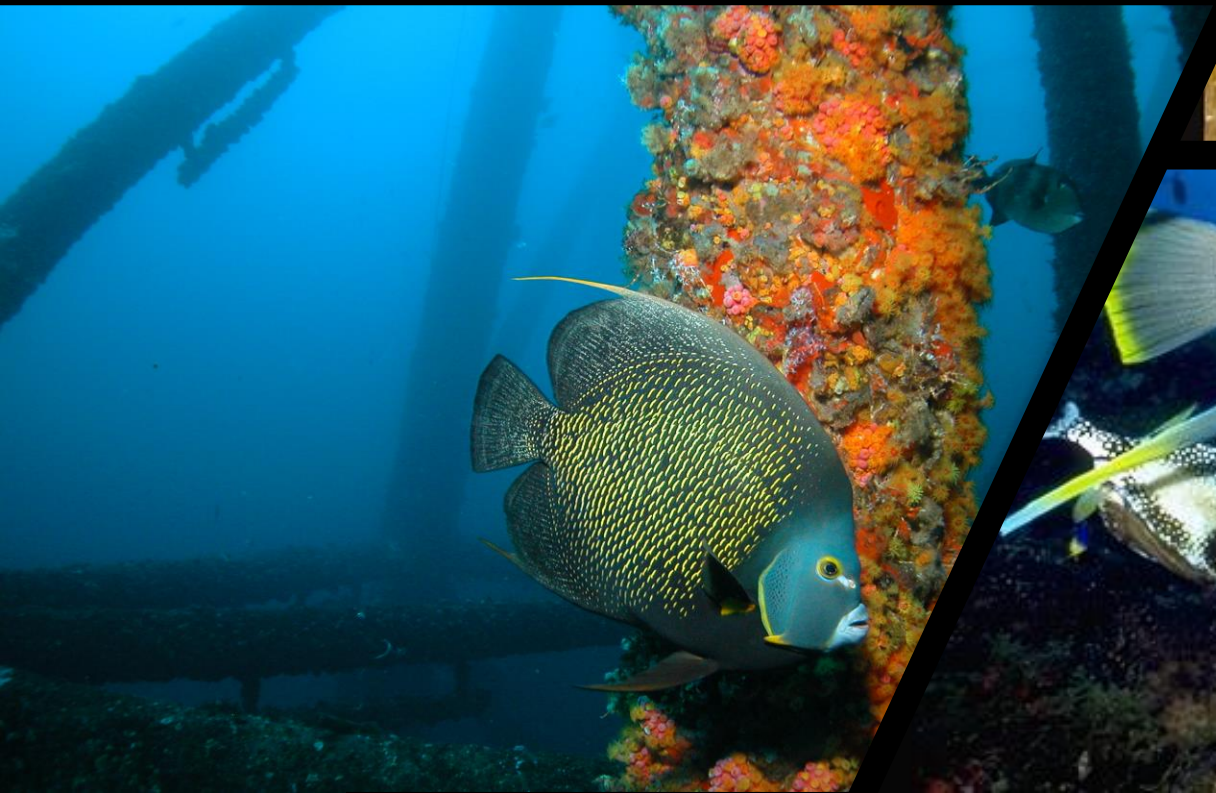
Monitoring

- Structural Compliance
- Functional Performance
 - Functional/ecological objectives are being met
 - Biological assessment
 - Socioeconomic assessment
- Adaptive management
- Fisheries management*



Impacts of Rigs-to-Reefs on fish communities









Community



Flower Gardens National Marine Sanctuary and HI-389





Artificial Reef Program

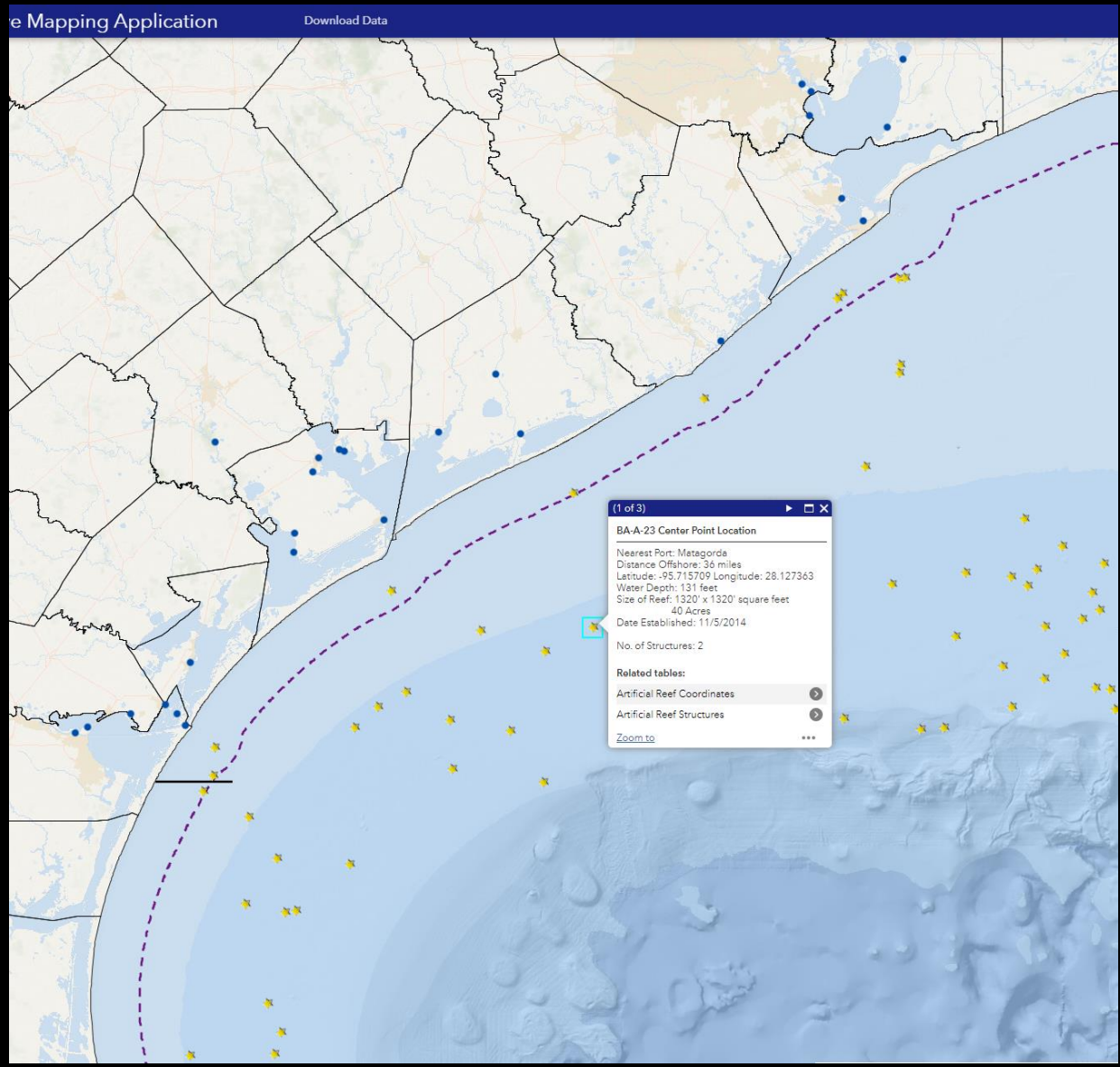
The Gulf of Mexico off the coast of Texas hosts commercial and recreational fishing and diving and plays an important role in local economies. It provides vital habitat for marine life of all types and links us with the ocean through an interconnected environment. Artificial reefs enhance this marine environment by providing additional habitat needed by marine life. The Texas Parks and Wildlife Artificial Reef Program, funded through industry partnerships and grants, creates and enhances this critical marine habitat to benefit Texans and the natural environment.




Divers on the reef

The Gulf Benefits from Artificial Reefs

Natural tropical coral reef systems are typically found in shallow, warm-water environments where sunlight penetration is high. The Texas Gulf has cooler (temperatures may drop to 60°F during the winter months) and murky waters created by strong currents and inflows carrying sediment. The combination of colder temperatures, freshwater inflows and barren substrate creates a situation in which natural tropical coral reefs typically do not survive, except in few cases.





Texas Parks and Wildlife Artificial Reef Program

6.7K followers · 8 following

[Message](#)

[Follow](#)

Posts About Photos Mentions

Details

[Page](#) · Government organization

[\(281\) 534-0100](tel:(281)534-0100)

Questions?